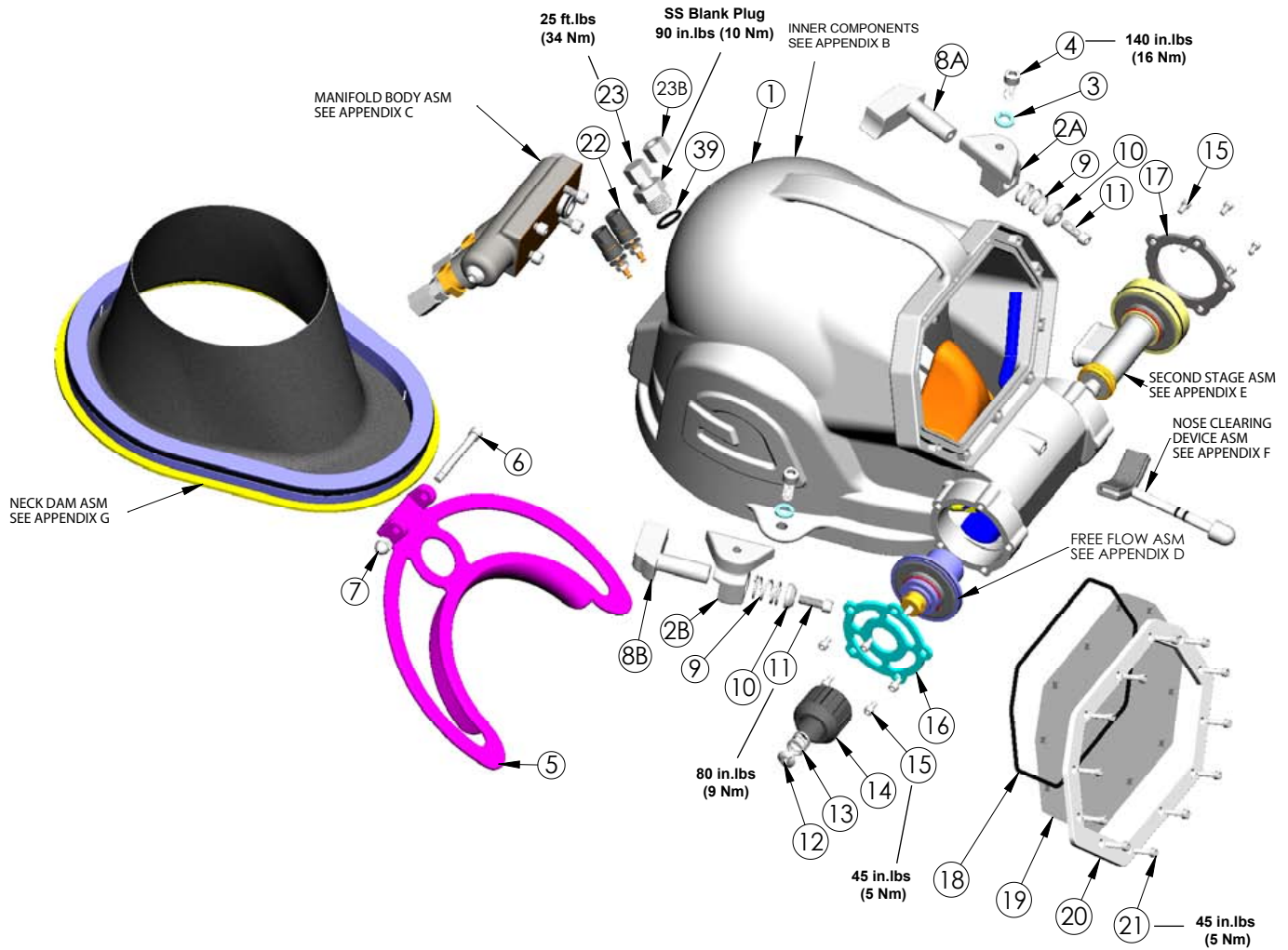


APPENDIX A – MAIN ASSEMBLIES



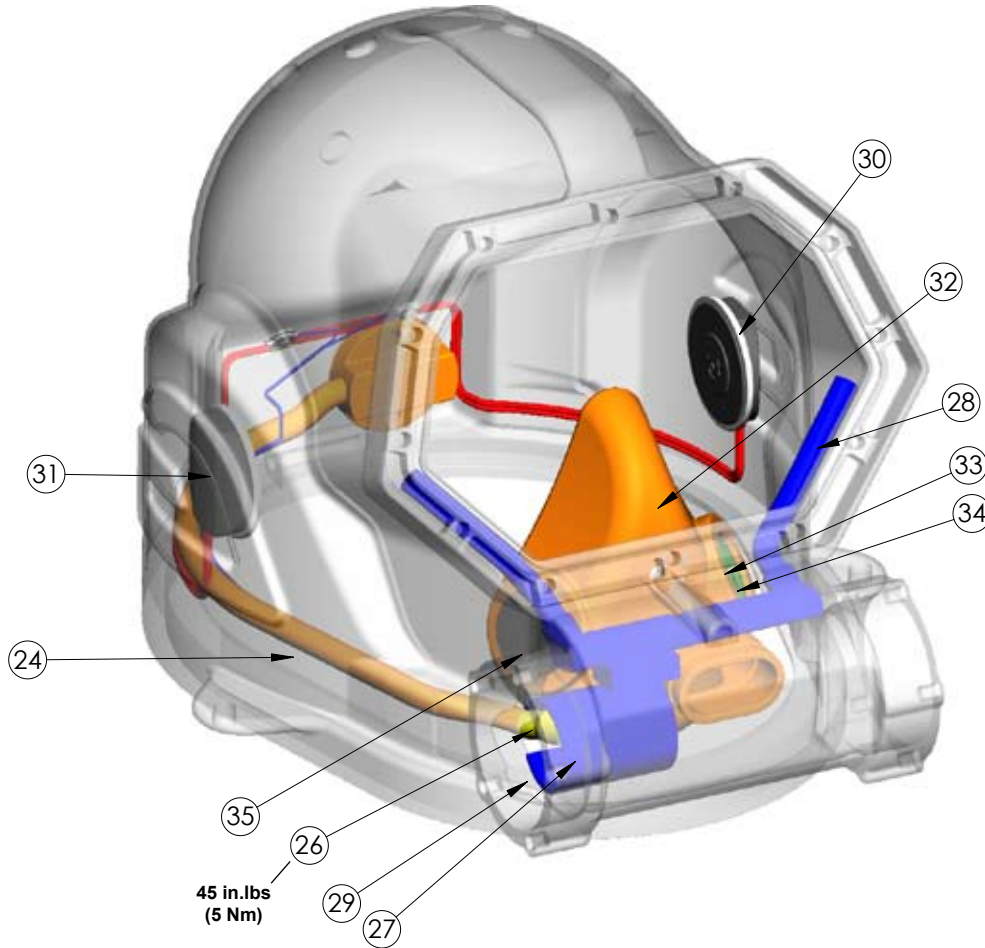
REV. E ~04/22/11

ITEM NO	QTY	AQA P/N	GORSKI P/N	DESCRIPTION
1	1	400001	1SS-0001	SHELL, HELMET
2A	1	400116	1SS-0101	BASE, LATCH, LEFT
2B	1	400117	1SS-0102	BASE, LATCH, RIGHT
3	2	400120	1SS-0003	WASHER, LATCH SPRING (2 PK)
4	2	400113	1SS-0099	SCREW, LATCH 5/16" - 18 X 3/4" LONG
5	1	400114	1SS-0100	RETAINER, NECK, MOD 1
6	1	400003	1SS-0006	BOLT, NECK RETAINER (5 PK)
7	1	400004	1SS-0007	NUT, NECK RETAINER (5 PK)
8A	1	400118	1SS-0103	LATCH, LEFT
8B	1	400119	1SS-0104	LATCH, RIGHT
9	2	400005	1SS-0009	SPRING, LATCH (5 PK)
10	2	400120	1SS-0105	WASHER, LATCH SPRING (2 PK)
11	2	400036	1SS-0044	SCREW, HEX, MANIFOLD (5 PK)
12	1	400006	1SS-0012	NUT, KNOB (5 PK)

ITEM NO	QTY	AQA P/N	GORSKI P/N	DESCRIPTION
13	1	400007	1SS-0013	SPRING, KNOB (5 PK)
14	1	400008	1SS-0014	KNOB, FREE FLOW
15	10	400009	1SS-0015	SCREW, EXHAUST VALVE COVER (5 PK)
16	1	400010	1SS-0016	COVER, EXHAUST VALVE
17	1	400011	1SS-0017	COVER, REGULATOR
18	1	400012	1SS-0018	O-RING, FACE PORT
19	1	400013	1SS-0019	PORT, FACE
20	1	400014	1SS-0020	RETAINER, PORT
21	12	400015	1SS-0021	SCREW, RETAINER PORT (5 PK)
22	2	400016	1SS-0022	POST, COMMUNICATION ASSEMBLY
23	1	400017	1SS-0023	BULKHEAD, COMM W/ SS BLANK PLUG ASSY
39	1	400031	1SS-0039	O-RING, MANIFOLD PLUG (10 PK)
23B	1	400122	1SS-0108	CAP & PLASTIC FERRULES, BULKHEAD ASSY

Part numbers in **BOLD ITALICS** indicate standard overhaul replacement part.

APPENDIX B – INNER COMPONENTS

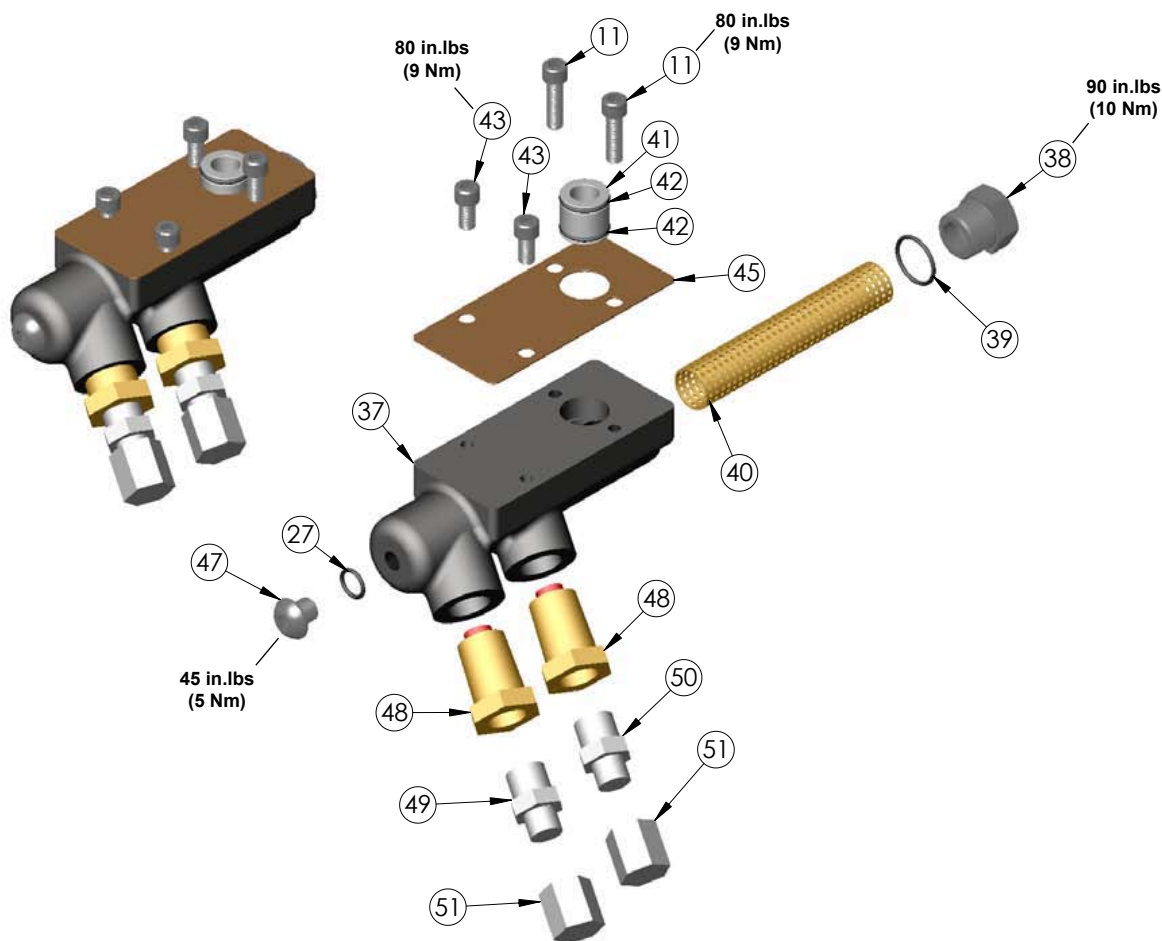


REV. D ~ 05/10/06

ITEM NO	QTY	AQA P/N	GORSKI P/N	DESCRIPTION
24	1	400138	N/A	AIRWAY ASSEMBLY
26	1	400021	1SS-0026	SWAGELOCK CONNECTOR
27	1	400022	1SS-0027	O-RING, SWAGELOCK CONN & PORT PLUG (10 PK)
28	1	400023	1SS-0028	TRAIN, DEFOGGER
29	1	400024	1SS-0029	BARREL, FREE FLOW
30	1	400129	1SS-0030	SPEAKER LEFT
31	1	400130	1SS-0031	SPEAKER RIGHT
32	1	400025	1SS-0032	MASK, ORAL NASAL
33	1	400026	1SS-0033	HOUSING, INHALATION VALVE
34	1	400027	1SS-0034	VALVE, INHALATION
35	1	400131	1SS-0035	MICROPHONE
N/S	1	400028	1SS-0036	HEAD LINER

Part numbers in **BOLD ITALICS** indicate standard overhaul replacement part.

APPENDIX C – MANIFOLD BODY ASSEMBLY

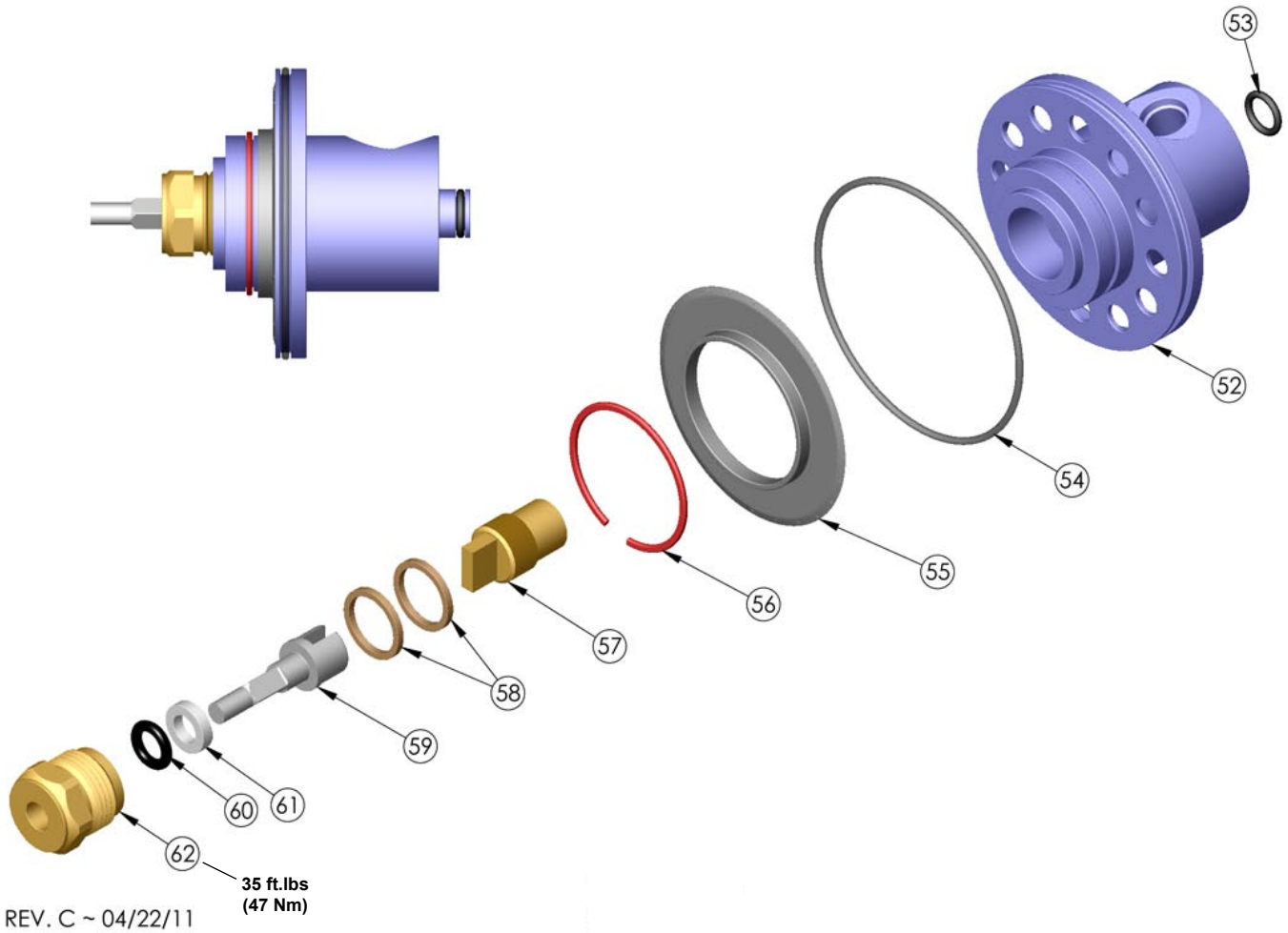


Rev. C ~ 05/10/06

ITEM NO	QTY	AQA P/N	GORSKI P/N	DESCRIPTION
37	1	400029	1SS-0037	BODY, MANIFOLD
38	1	400030	1SS-0038	PLUG, MANIFOLD (LARGE)
39	1	400031	1SS-0039	O-RING, MANIFOLD PLUG (10 PK)
40	1	400032	1SS-0040	SCREEN
41	1	400033	1SS-0041	INSERT, MANIFOLD
42	2	400034	1SS-0042	O-RING, MANIFOLD CONNECTOR (10 PK)
43	2	400035	1SS-0043	SCREW, HEX, MANIFOLD (5 PK)
11	2	400036	1SS-0044	SCREW, HEX, MANIFOLD (5 PK)
45	1	400037	1SS-0045	GASKET, MANIFOLD
27	1	400022	1SS-0027	O-RING, SWAGELock CONN & PORT PLUG (10 PK)
47	1	400039	1SS-0047	PORT PLUG
48	2	400040	1SS-0048	VALVE, CHECK
49	1	400041	1SS-0049	FITTING, SCUBA
50	1	400042	1SS-0050	FITTING, HOSE
51	2	400043	1SS-0051	CAP, FITTING, BRASS

Part numbers in **BOLD ITALICS** indicate standard overhaul replacement part.

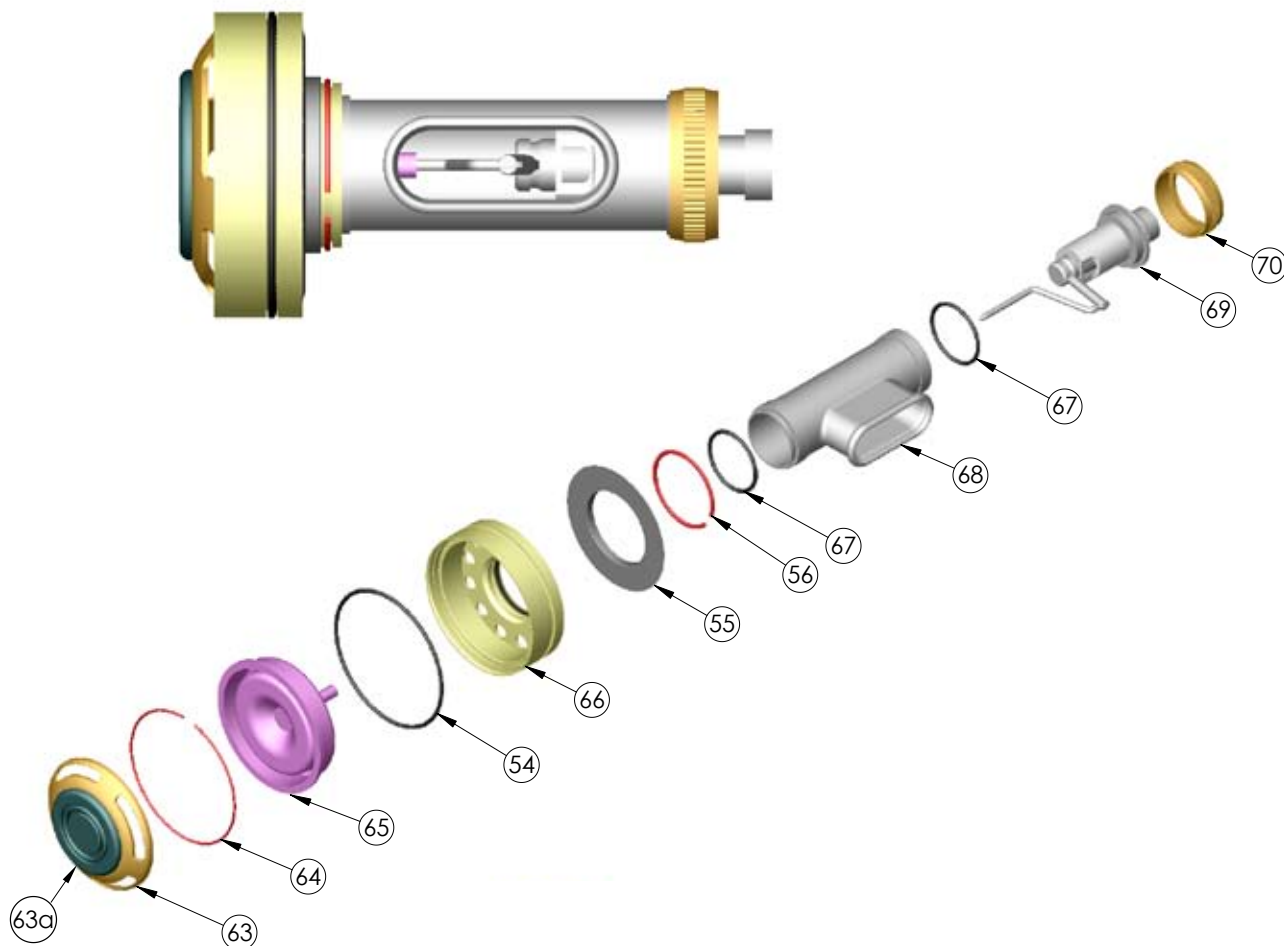
APPENDIX D – FREE FLOW VALVE ASSEMBLY



ITEM NO	QTY	AQA P/N	GORSKI P/N	DESCRIPTION
52	1	400044	1SS-0052	BODY, FREE FLOW EXHAUST VALVE
53	1	400045	1SS-0053	O-RING, EXHAUST, SMALL (10 PK)
54	1	400046	1SS-0054	O-RING, EXHAUST, LARGE (10 PK)
55	1	400047	1SS-0055	VALVE, FLAPPER EXHAUST
56	1	400048	1SS-0056	RING, SNAP FLAPPER VALVE
57	1	400049	1SS-0057	SEAT, FREE FLOW VALVE
58	2	400050	1SS-0058	WASHER, COPPER (5 PK)
59	1	400051	1SS-0059	STEM, FREE FLOW VALVE
60	1	400052	1SS-0060	O-RING, STEM FREE FLOW VALVE (10 PK)
61	1	400053	1SS-0061	WASHER, TEFLON (5 PK)
62	1	400054	1SS-0062	VALVE, FREE FLOW BONNET

Part numbers in **BOLD ITALICS** indicate standard overhaul replacement part.

APPENDIX E – SECOND STAGE REGULATOR ASSEMBLY

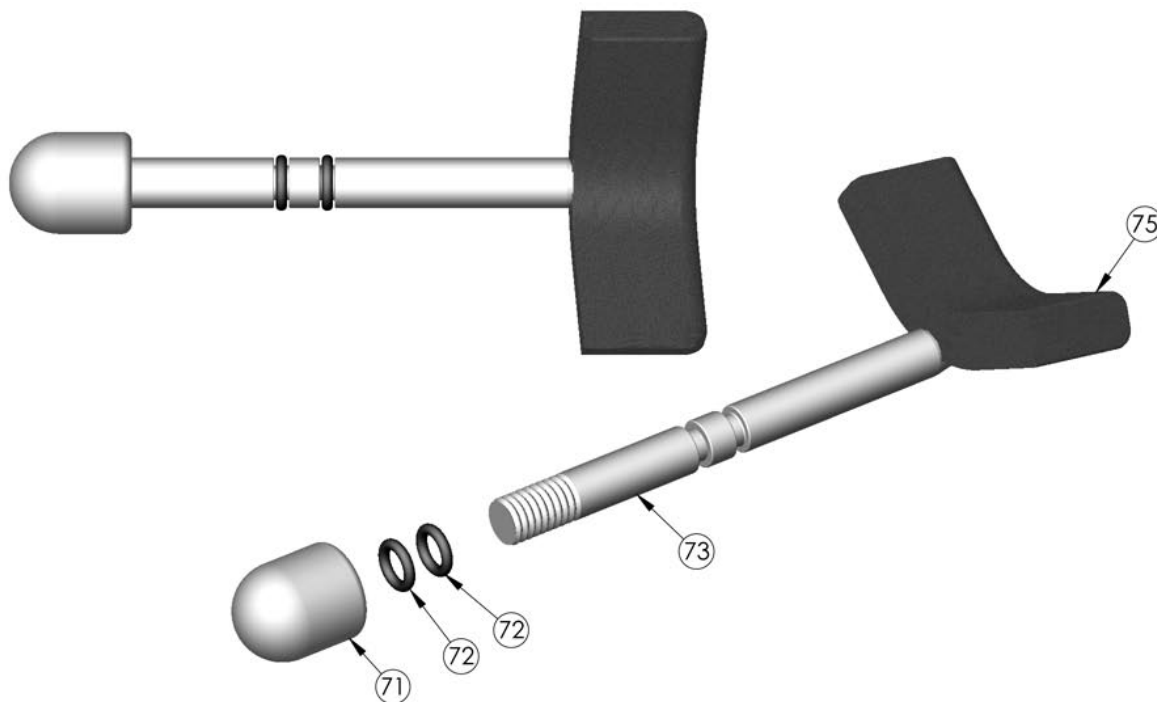


REV. B ~ 05/10/06

ITEM NO	QTY	AQA P/N	GORSKI P/N	DESCRIPTION
63	1	400055	1SS-0063	COVER, DIAPHRAGM
63a	1	400056	1SS-0063	BUTTON, PURGE (5 PK)
64	1	400057	1SS-0064	RING, SNAP, COVER (5 PK)
65	1	400058	1SS-0065	DIAPHRAGM, SECOND STAGE
66	1	400059	1SS-0066	HOUSING, SECOND STAGE DIAPHRAGM
67	2	400060	1SS-0067	O-RING, REGULATOR BODY, SMALL (10 PK)
68	1	400061	1SS-0068	BODY, SECOND STAGE MAIN
69	1	400062	1SS-0069	ASSEMBLY, VALVE
70	1	400072	1SS-0070	RING, CONNECTING
54	1	400046	1SS-0054	O-RING, EXHAUST, LARGE (10 PK)
55	1	400047	1SS-0055	VALVE, FLAPPER EXHAUST
56	1	400048	1SS-0056	RING, SNAP FLAPPER VALVE

Part numbers in **BOLD ITALICS** indicate standard overhaul replacement part.

APPENDIX F – NOSE CLEARING DEVICE (NCD) :ASSEMBLY

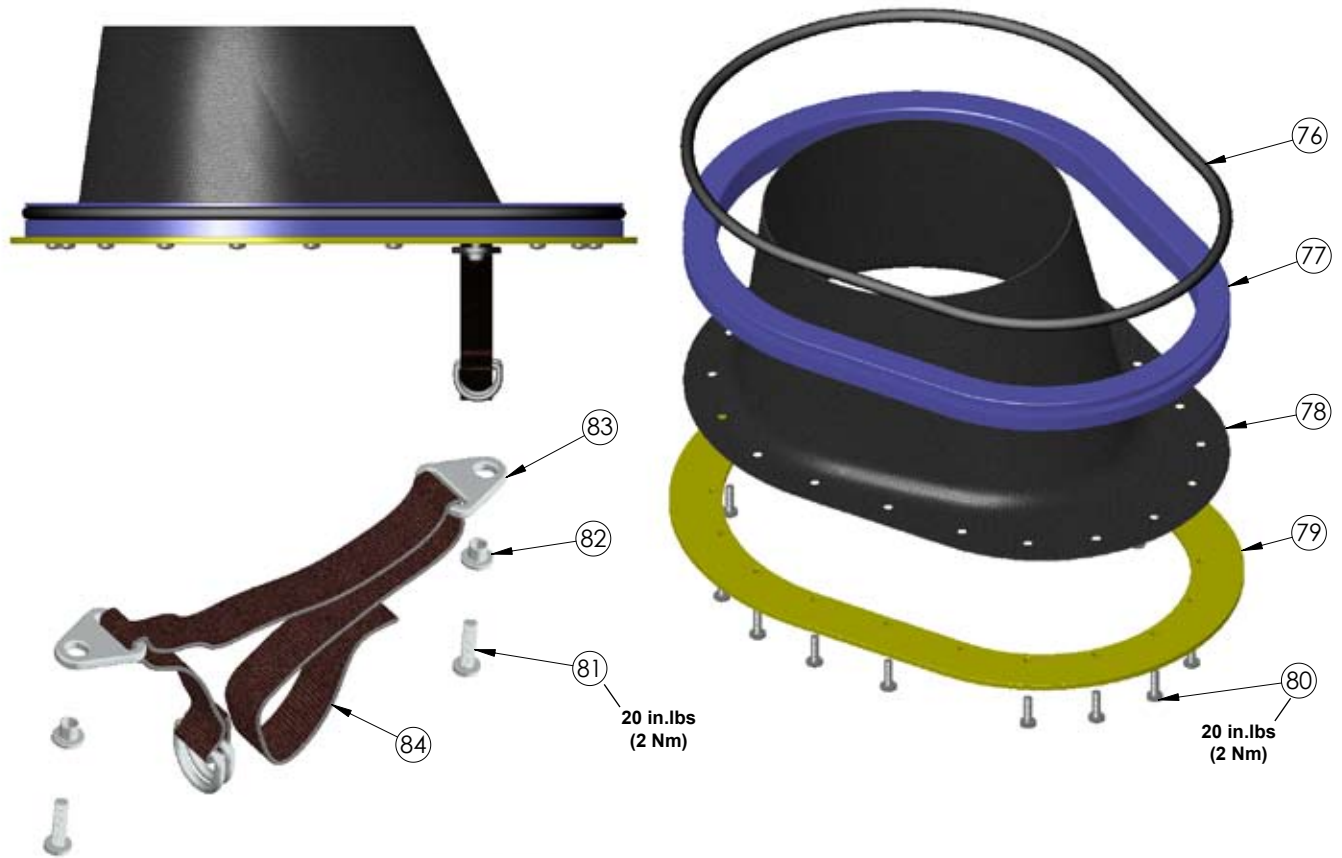


REV. A~05/11/06

ITEM NO	QTY	AQA P/N	GORSKI P/N	DESCRIPTION
71	1	400073	1SS-0071	KNOB, NCD
72	2	400074	1SS-0072	O-RING, NOSE CLEARING DEVICE (NCD) (10 PK)
73	1	400140	N/A	NOSE CLEARING DEVICE (WELDED)
75	1	400077	1SS-0075	NOSE PAD, NEOPRENE (5 PK)

Part numbers in **BOLD ITALICS** indicate standard overhaul replacement part.

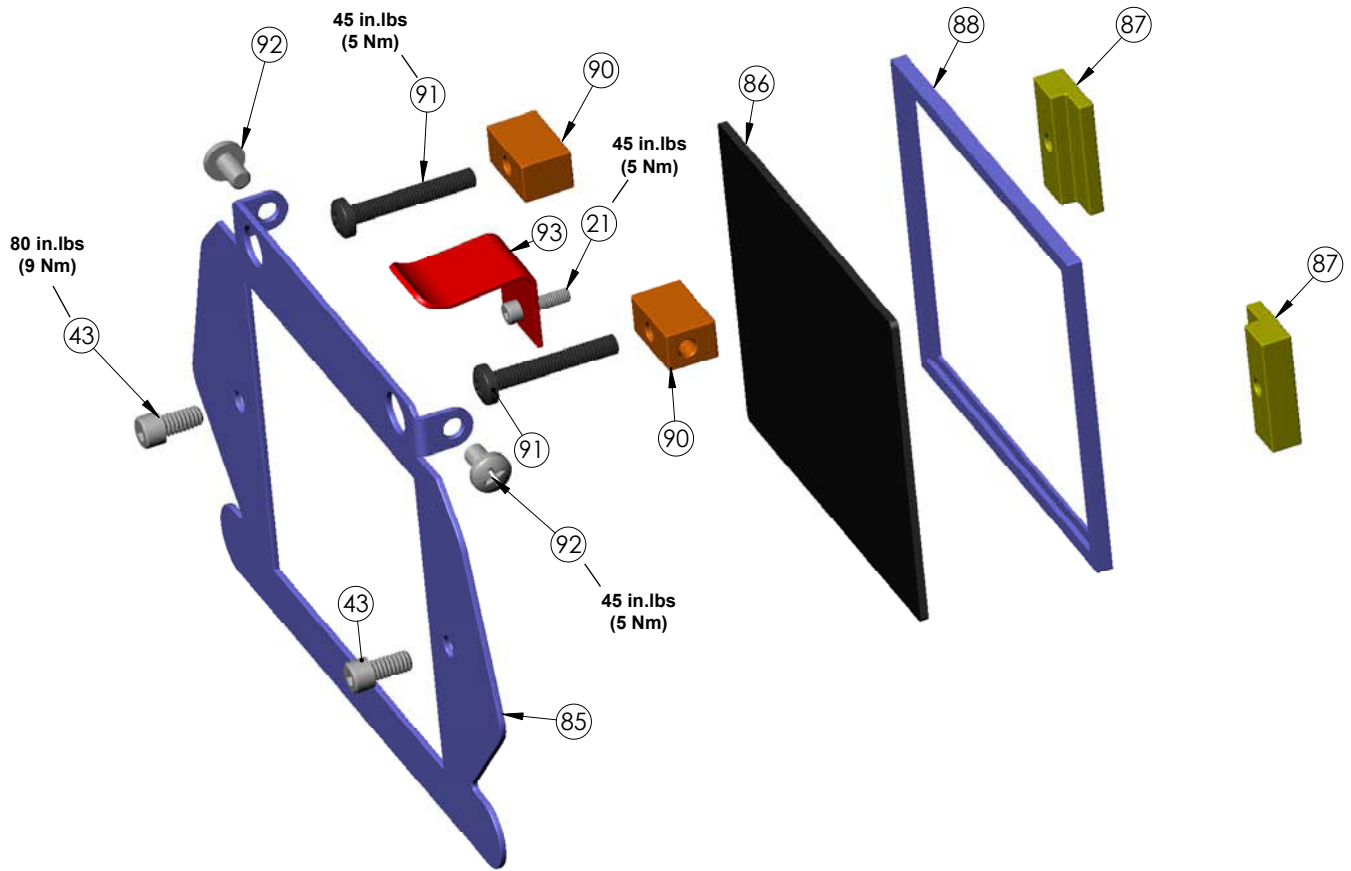
APPENDIX G – NECK DAM ASSEMBLY



REV. B ~ 05/11/06

ITEM NO	QTY	AQA P/N	GORSKI P/N	DESCRIPTION
76	1	400078	1SS-0076	RING, QUAD
77	1	400079	1SS-0077	RING, NECK UPPER
78	1	400080	1SS-0078	SEAL, NECK
79	1	400081	1SS-0079	RING, NECK BOTTOM
80	18	400082	1SS-0080	SCREW, NECK RING LOWER (5 PK)
81	2	400083	1SS-0081	SCREW, BUCKLE STRAP (5 PK)
82	2	400084	1SS-0082	BUSHING, BUCKLE STRAP (5 PK)
83	2	400085	1SS-0083	BUCKLE, STRAP
84	1	400086	1SS-0084	STRAP, NYLON W/ D-RINGS

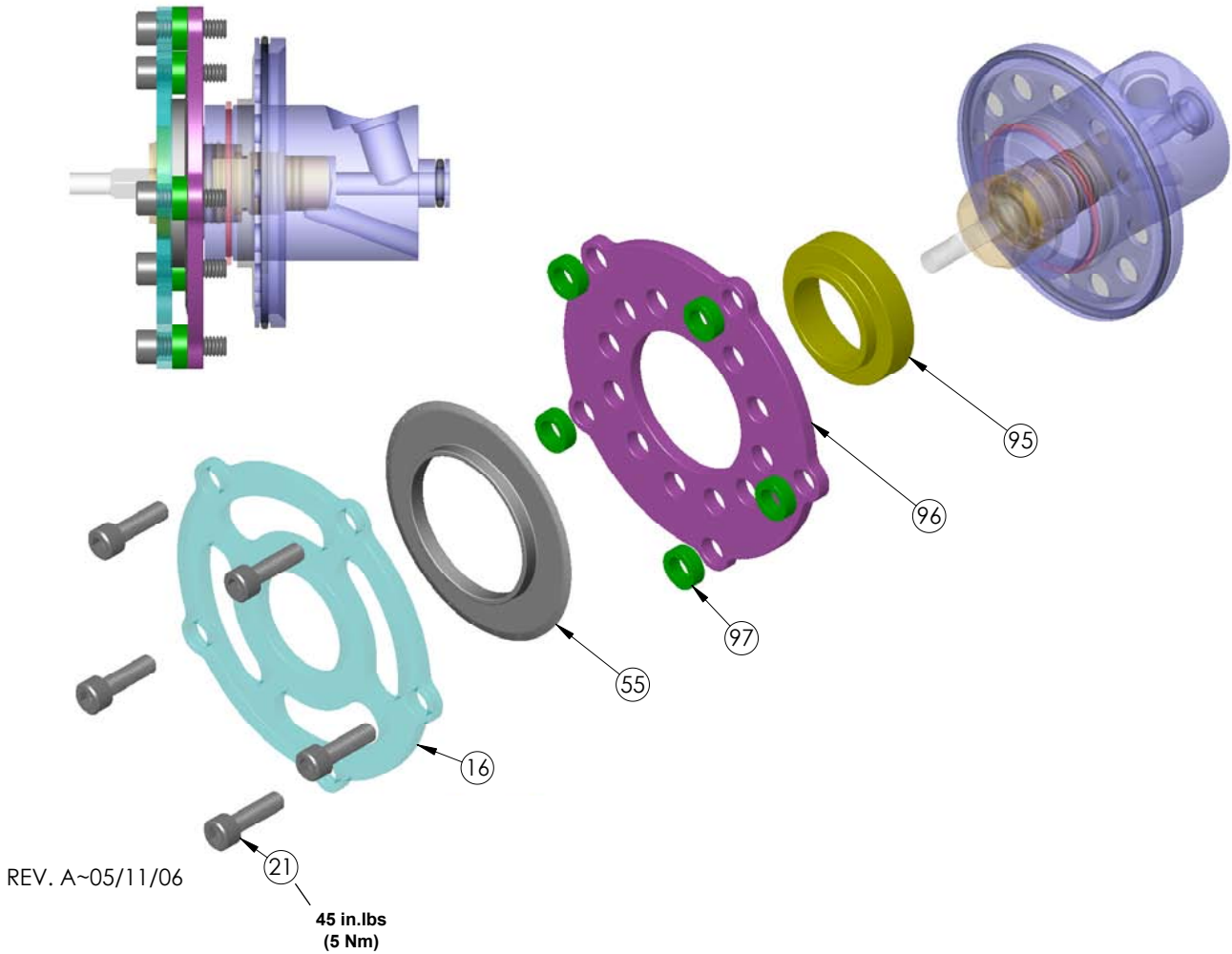
APPENDIX H – WELDING SHIELD KIT



REV. A~06/03/04

ITEM NO	QTY	AQA P/N	GORSKI P/N	DESCRIPTION
85	1	400087	1SS-0085	BODY, WELDING SHELL (SHIELD)
86	1	400088	1SS-0086	LENS, WELDING
87	2	400089	1SS-0087	BRACKET, LENS HOLDING (2 PK)
88	1	400090	1SS-0088	GASKET, WELDING LENS
43	2	400035	1SS-0043	SCREW, HEX, MANIFOLD (5 PK)
90	2	400092	1SS-0090	HINGE, BLOCK WELDING LENS (2 PK)
91	2	400093	1SS-0091	SCREW, HINGE BLOCK MOUNTING (5 PK)
92	2	400094	1SS-0092	SCREW, HINGE (5 PK)
93	1	400095	1SS-0093	SHIELD, WELDING SPRING
21	1	400015	1SS-0021	SCREW, RETAINER PORT (5 PK)

APPENDIX J- DOUBLE EXHAUST KIT



ITEM NO	QTY	AQA P/N	GORSKI P/N	DESCRIPTION
95	1	400097	1SS-0095	BUSHING, DUAL EXHAUST
96	1	400098	1SS-0096	SEAT, DUAL EXHAUST
97	5	400099	1SS-0097	RING, SPACER (5 PK)
21	5	400015	1SS-0021	SCREW, RETAINER PORT (5 PK)
55	1	400047	1SS-0055	VALVE, FLAPPER EXHAUST